

SHORT COMMUNICATIONS

A case of unknown abnormality of reproductive system of Buccinidae (Neogastropoda)

YURI I. KANTOR

A. N. Severtzov Institute of Ecology and Evolution, Russian Academy of Sciences, Leninski prospect 33, Moscow 119071, Russia, e-mail kantor@malaco-sevin.msk.ru

Случай неизвестной аномалии половой системы Buccinidae (Neogastropoda)

Ю. И. КАНТОР

Институт проблем экологии и эволюции им. А. Н. Северцова РАН, Москва, 119071, Ленинский просп. 33

While examining morphology of *Buccinum osagawai* Habe et Ito, 1968, collected by the traps in the northern part of Okhotsk Sea (58°26'N, 150°27'E, depth 123 m, coll. V. Ovsyanikov) I found a strange abnormality in penis morphology (Fig. 1).

In normal penis (Fig. 1 A-B), the seminal duct opens on the tip of seminal papilla surrounded by a circular fold. The size and shape of papilla in *Buc-*

cinum allows to discriminate some of the species [Golikov, 1980].

In a single specimen out of 12 males, examined by me, penis had two papillae on its tip (Fig. 1 C) – one, situated in a regular position (lower one), the other, additional (marked by an arrow), on the antero-dorsal edge of the penis.

Dissection of the penis revealed, that the seminal duct is single and opens on the tip of the lower papilla.

This is the first record of such abnormality in *Buccinum* and Buccinidae. In some species of *Neptunea* [eg. *N. intersculpta* (Sowerby, 1899); *N. lamellosa* Golikov, 1962] the seminal opening is surrounded by several rows of small papillae [Golikov, 1963]. Since the additional papilla was found in a single specimen of *Buccinum*, I can not decide, whether it can be an atavistic re-appearance of such

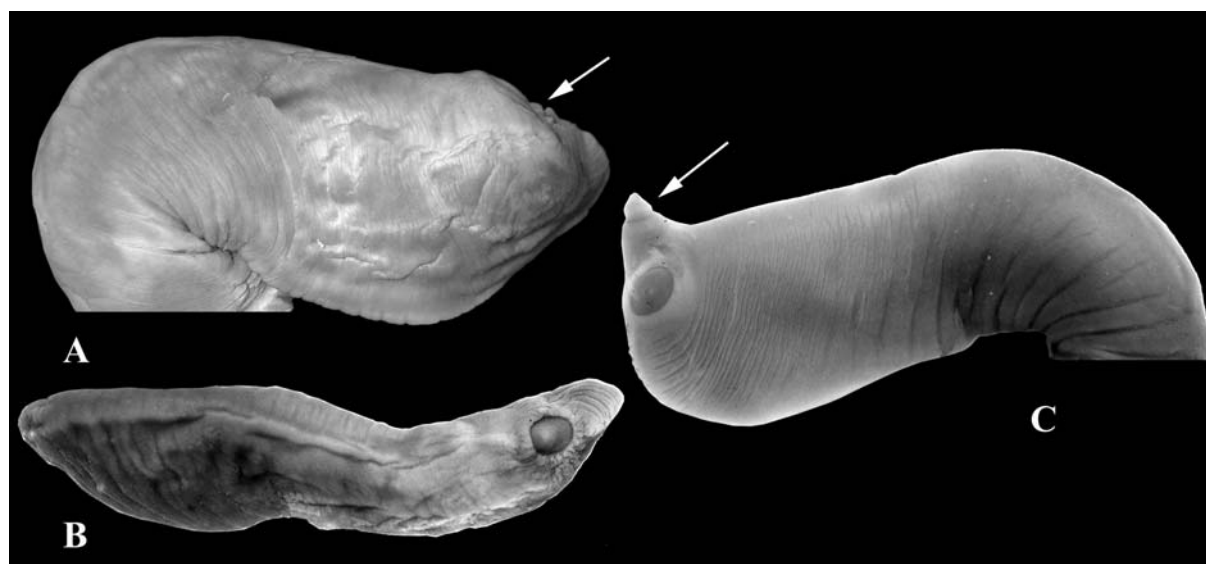


FIG. 1. Morphology of penis in normal (A-B) and teratic (C) specimens of *Buccinum osagawai*. A – lateral outer view; B – apical view; C – lateral inner view. Arrow indicates the additional seminal papilla.

РИС. 1. Морфология пениса у нормального (А-В) и уродливого (С) экземпляров *Buccinum osagawai*. А – вид сбоку с внешней стороны; В – вид сверху; С – вид сбоку с внутренней стороны. Стрелкой обозначена дополнительная семявыносящая папилла.